

RM Series

Right-angle Hollow Rotating Platform



Ordering Representation

RM - **130** - **30** - **14** - **50** - **70**

Series Model Ratio Motor Shaft Diameter Motor Pilot Diameter Motor P.C.D

Attention: (Servo Motor P.C.D)
(Stepper Motor P.C.D)

RM	130 180 260	LI: 15/21/30 L2: 60/75/105/120 150/210/300
----	-------------------	--

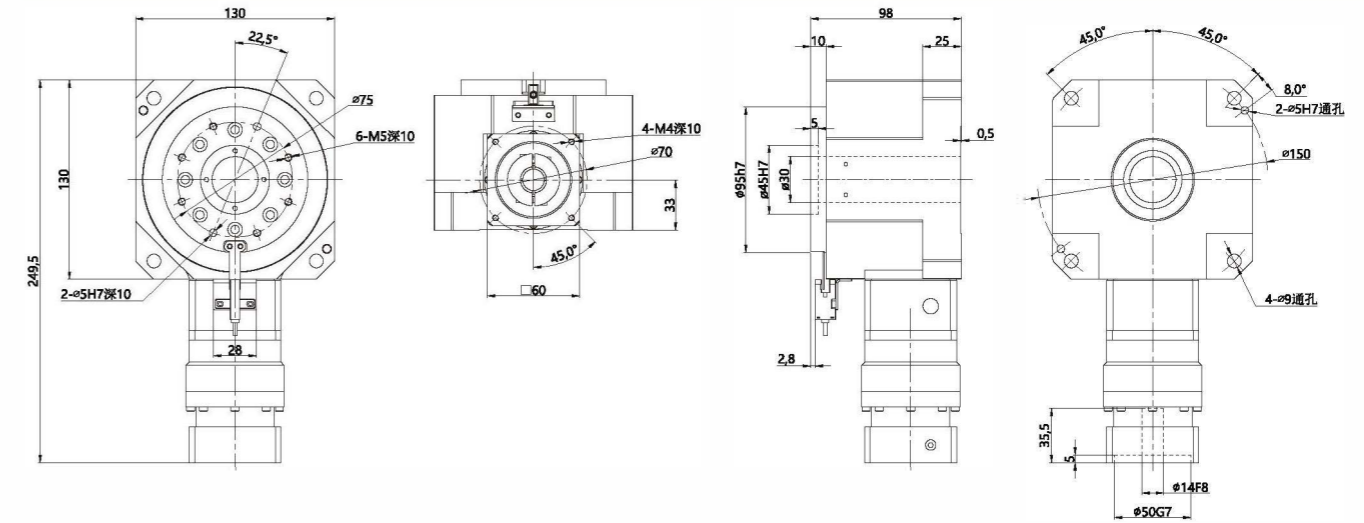
Technical Parameter

Model		RM130			RM180			RM260		
Bearing structure		Cross roller bearing								
Reduction ratio	i	15	21	30	15	21	30	15	21	30
Rated output torque	N.m	150	130	105	430	400	360	2950	2650	2200
Output torque	N.m	3 Times rated torque								
Positioning accuracy	arc-min	≤2								
Repeated positioning accuracy	arc-sec	≤30								
Allowable disk speed	rpm	200 Intermittent operation								
Adapt to servo motor	W	200-400			750-1500			2000-5000		
Suitable for stepping motor		57 Stepper			86/110 Stepper			130/150 Stepper		
Allowable axial load	N	7300			13500			29600		
Allowable radial load	N	7300			13500			29600		
Design load	Kg	50			150			1000		
Allowable moment of inertia	N.m	50			110			750		
Torsional rigidity	N.m/arcmin	25			45			175		
Overtuning moment	N.m	520			1420			6300		
Accuracy life	h	20000h Intermittent operation								
Protection level	IP	54								
Lubrication method		Long-term lubrication								
Installation method		Arbitrary								
Concentricity of rotating platform	mm	≤0.01								
Parallelism of rotating platform	mm	≤0.01								
Transmission efficiency	%	95			95			95		
Noise	db	≤57			≤63			≤63		
Weight	Kg	7			17			17		

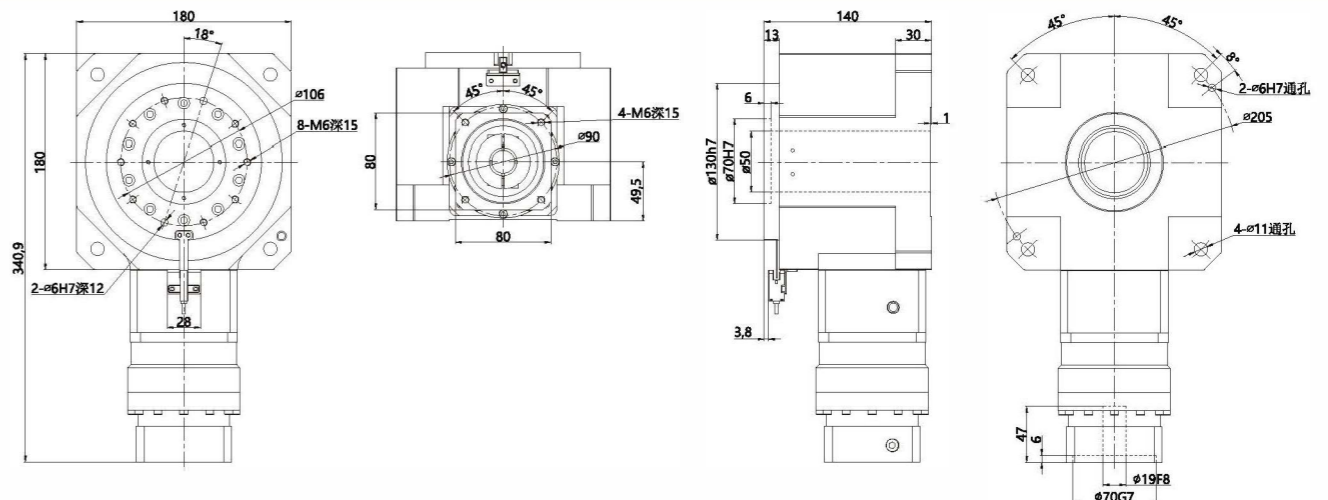
Attention: If the parallelism of the rotating platform has higher requirements, please contact our sales staff

Outline Dimensional

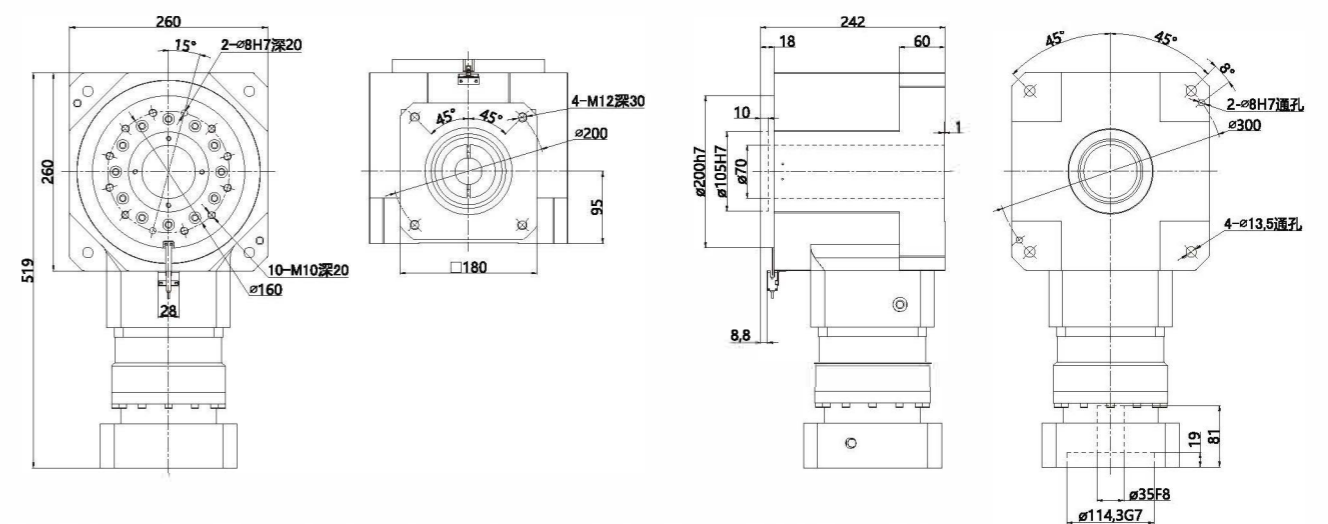
RM130- (15/21/30 Ratio for Servo Motor 200-400W, 57 Stepper Motor)



RM180- (15/21/30 Ratio for Servo Motor 750-1500W, 86/110 Stepper Motor)



RM260- (15/21/30 Ratio for Servo Motor 2000-5000W, 130/150 Stepper Motor)



* Specifications mentioned above are for reference, the actual parameter situation is based on the tech data provided